
CHEPMATE[®] MINIMUM SYSTEM REQUIREMENTS

TABLE OF CONTENTS

TABLE OF CONTENTS	2
1 CUSTOMER INTRODUCTION	3
1.1 Installation Requirements	3
1.2 Disclaimer	3
1.3 Overview	3
1.4 Product Support	3
1.5 CHEPMate® Server Requirements	4
1.5.1 Hardware Requirements	4
1.5.2 Software Requirements	4
1.6 CHEPMate® Client Requirements	6
1.6.1 Hardware Requirements	6
1.6.2 Software Requirements	6
2 CHEPMATE CONFIGURATION	7

1 CUSTOMER INTRODUCTION

1.1 INSTALLATION REQUIREMENTS

To install CHEPMate v3 you will require the following from CHEP:

- Access the system support site at au.chepsupport.com. Download the Server and Client components from the Software TAB.
- Call CHEP (13 24 37) for the following:
 - Installation/Set-up Import File.
 - The CHEPMate daily password.
 - Unique docket prefix & suffix.

1.2 DISCLAIMER

CHEP makes no implied or express warranties or representations of merchantability or condition for a particular use; such implied or express warranties are hereby specifically excluded (except to the extent that they cannot be excluded by legislation such as the Trade Practices Act 1974). The recipient agrees, to the fullest extent permitted by law, that they shall not seek to sue or hold CHEP liable whether in contract, tort, equity, statute or otherwise by reason of provision of any information contained in this publication. References in this publication to CHEP products and services represent the latest development and do not imply that CHEP intends to make them available in all countries in which CHEP operates. For some products, earlier versions are sometimes supplied when the latest version is not available. Recipients should form their own views on the information contained in this publication and should not rely on any statements made by CHEP in this publication or elsewhere. CHEP shall not be liable for any direct, indirect or consequential loss whatsoever or howsoever arising in respect of any information contained in this publication.

1.3 OVERVIEW

CHEPMate consists of two components which require installation, Server and Client. Both components need to be available for this software to function. While only one instance of the server component can exist, multiple client components can be installed pointing to the server. This software has also been adapted for use over Terminal services and CITRIX environments.

CHEPMate utilises SQL Server 2005 Express. SQL Server 2005 Express does not support the Banyan VINES Sequenced Packet protocol (SPP), Multiprotocol, AppleTalk, or NWLink IPX/SPX network protocols. Clients previously (on MSDE 2000) connecting with these protocols must select a different protocol to connect to SQL Server 2005 Express.

1.4 PRODUCT SUPPORT

If you have questions about using CHEPMate, contact the CHEP Helpdesk:
Phone 132437 or Email: chephelpdesk@chep.com.

Alternatively, refer to your User Differences document for specific CHEPMate version changes.

1.5 CHEPMATE® SERVER REQUIREMENTS

Actual requirements may vary based on your system configuration and the applications and features you have installed and running. Additional available hard-disk space and RAM may be required.

1.5.1 HARDWARE REQUIREMENTS

The following is the minimum requirements for the use of CHEPMate Server:

- Pentium III compatible (or higher)
- 1.0 GHz processor (or higher)
- 512 MB RAM
- 1 GB Free Hard Disk Drive space

1.5.2 SOFTWARE REQUIREMENTS

CHEPMate Server can run on the following Operating Systems:

- Windows Server 2003 Standard Edition SP1
- Windows 2000 SP4
- Windows XP SP2
- Windows Vista (32 or 64 bit)
- Windows 7 (32 or 64 bit)
- MS Internet Explorer 6.0 SP1 or later

- NT Server 4.0 Enterprise Edition, with SP5 or later
- NT Workstation 4.0 with SP5 or later
- NT® Server 4.0 with SP5 or later
- Windows 95 & 98

These operating systems ARE NOT compatible.

As part of the CHEPMate Server Install, the following components are installed automatically where required, and cannot be customised.

- Microsoft SQL Server 2005 Express
- Microsoft SQL Server Native Client
- Microsoft SQL Server Setup Support Files (English)
- Microsoft SQL Server VSS Writer

For more information, go to <http://www.microsoft.com/sql>

Further notes about CHEPMate Server:

- **If you are NOT installing the CHEPMate Server on a dedicated file server, please be aware of the following:**
 - The machine 'acting' as the Server must always be turned on.
 - If there are any issues with the machine which is the 'acting' Server, no-one will be able to get access to the CHEPMate system.
 - The machine 'acting' as the Server may have an increased traffic load if multiple clients simultaneously access the database.
 - A backup routine must be devised to ensure the backup folder and its contents are copied from the 'acting' Server to an actual Server to enable successful backups in the case of a hard drive crash.

- To successfully install the server component it is necessary to ensure that the **"File and Printer Sharing for Microsoft Networks"** component is installed on the machine prior to installation.

- Once installed, the CHEP directory (Default: C:\Program Files\CHEP), will need to be shared as CHEP, and all CHEPMate users will require write access to the **Share Permissions**.

(Note: the directory pathway may be on a drive specific to your requirements – for example D:\CHEP).

- **Directory Permissions** will also need to be set to the above directory, so all users who use CHEPMate have write access to it, and all sub folders below.

- A daily backup routine will need to be setup for the "Back up" folder in order to backup the data from the system. The default location of the backup folder is:

C:\Program Files\CHEP\CMSENET\SQL\DATA\MSSQL.1\MSSQL\DATA\BACKUP

1.6 CHEPMATE® CLIENT REQUIREMENTS

Actual requirements may vary based on your system configuration and the applications and features you have installed. Additional available hard-disk space may be required.

1.6.1 HARDWARE REQUIREMENTS

The following is the minimum requirements for the use of CHEPMate Client:

- Pentium III compatible (or higher)
- 1.0 GHz processor (or higher)
- 512 MB RAM
- 1 GB Free Hard Disk Drive space
- 800 x 600 minimum monitor resolution

1.6.2 SOFTWARE REQUIREMENTS

CHEPMate Client can run on the following Operating Systems:

- Windows Server 2003 Standard Edition SP1
- Windows 2000 SP4
- Windows XP SP2
- Windows Vista (32 or 64 bit)
- Windows 7 (32 or 64 bit)
- MS Internet Explorer 6.0 SP1 or later
- MAPI compliant Email System for auto email functionality.

- | | |
|---|---|
| <ul style="list-style-type: none">• NT Server 4.0 Enterprise Edition, with SP5 or later• NT Workstation 4.0 with SP5 or later• NT® Server 4.0 with SP5 or later• Windows 95 & 98 | <p>These operating systems ARE NOT compatible.</p> |
|---|---|

As part of the CHEPMate Client Install, the following extra components are installed automatically where required, and cannot be customised.

- [.Net](#) Framework 2.0

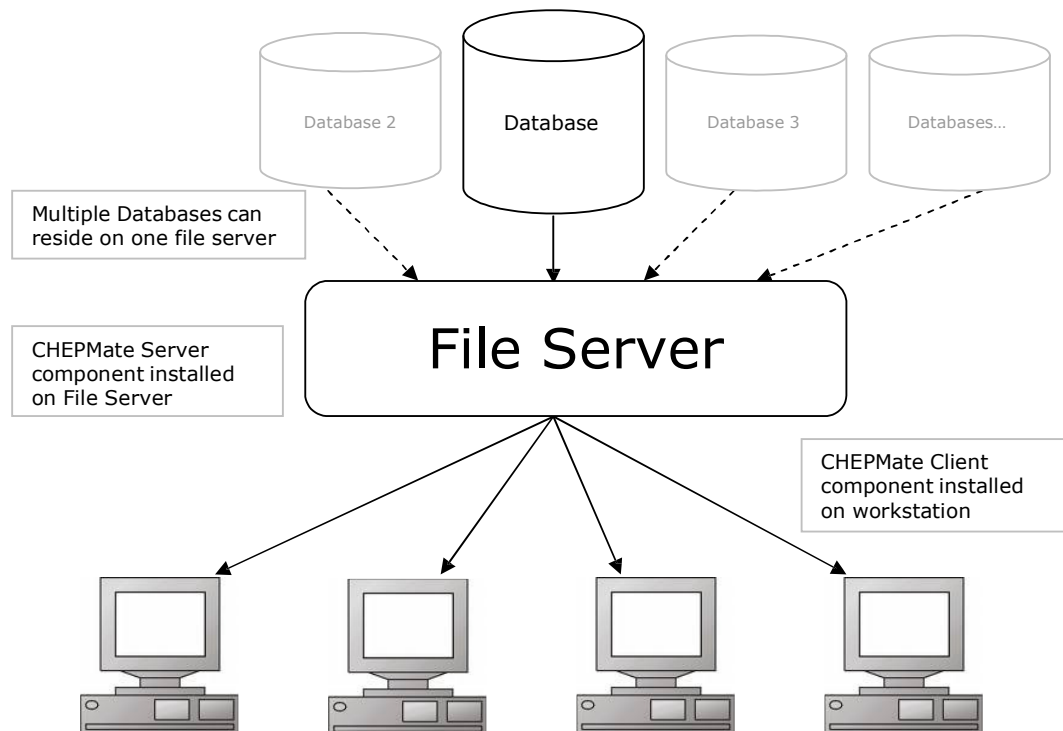
2 CHEPMATE CONFIGURATION

1. Standalone Configuration



2. File Server Configuration

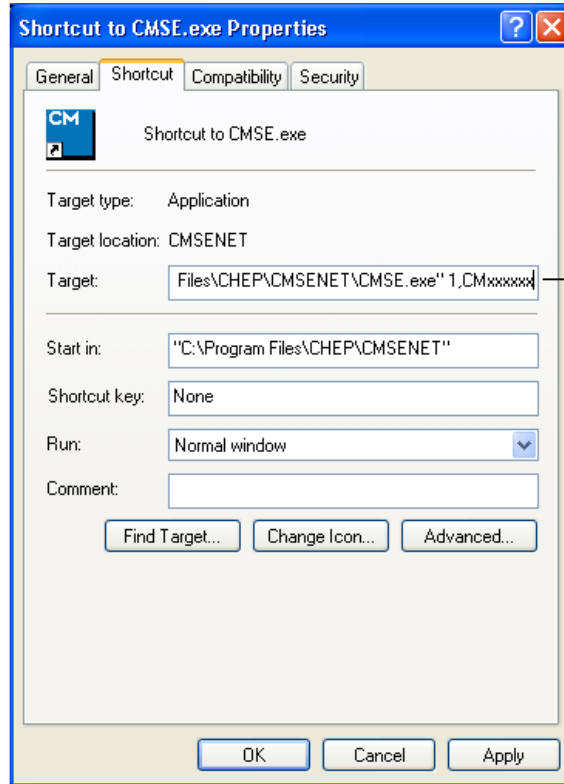
- CHEPMate Server component is installed on a File Server
- CHEPMate Client component is installed on a workstation.
- Multiple Databases can reside on one File Server



- All workstations, with CHEPMate Client installed, pointing to the file server will have access to the Database(s) on the File Server.

Multiple Icons for Multiple Databases:

- To have multiple icons of CHEPMate client pointing to an individual database, follow this process:
- 1. Create a shortcut of CMSE.exe from C:\Program Files\CHEP\CMSNET (**The shortcut should be created from this path only**)
 2. Go to the properties of CMSE.exe and amend the Target field as shown in the picture below.



Initial Target:-
"C:\Program Files\CHEP\CMSNET\CMSE.exe"

Change Target to:-
"C:\Program Files\CHEP\CMSNET\CMSE.exe" 1, CMXXXXXX

After quotation mark:

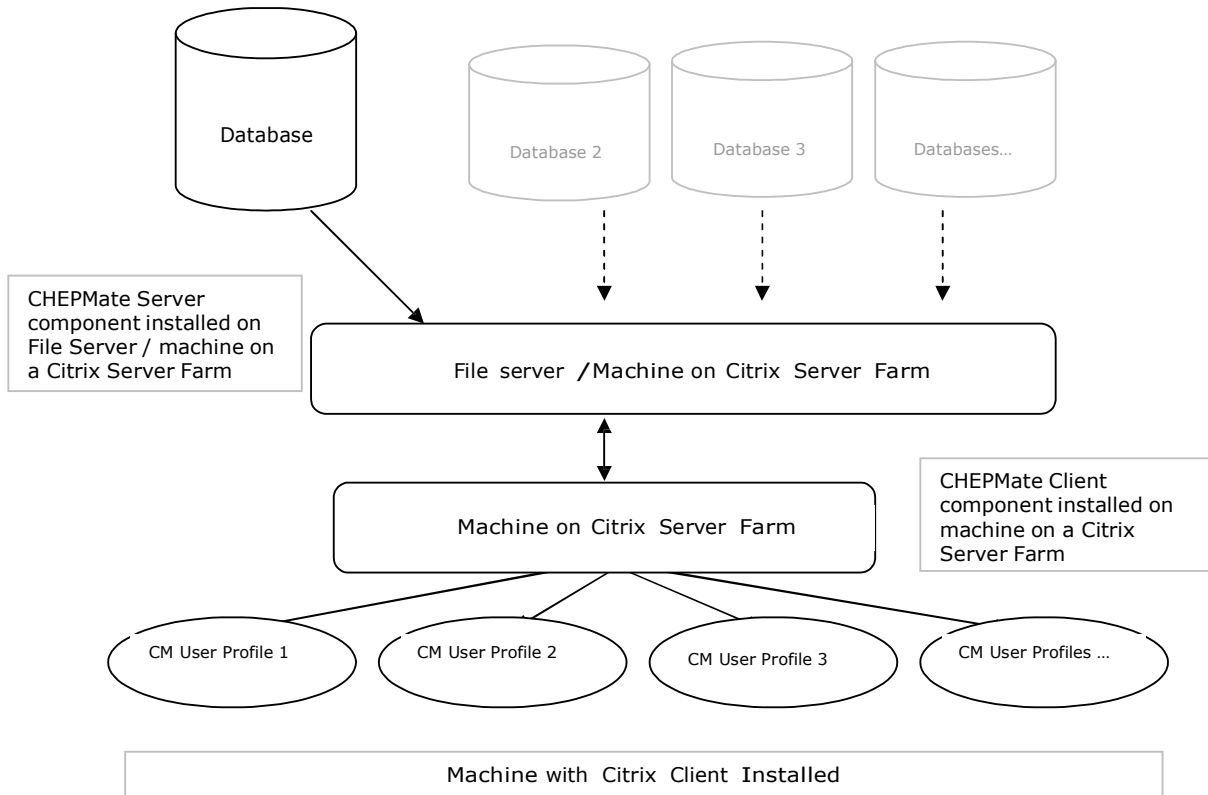
1. Hit the Space bar once
2. Number the database(Numbering should be discrete for each database)
3. ','
4. Database name (i.e. CMXXXXXX)
5. Hit apply

This process will allow this icon to access only the specified database.

- This process creates a separate icon for each separate database.
- This process also allows for different security levels to be applied to different databases.

3. Citrix / Terminal Server / Application server

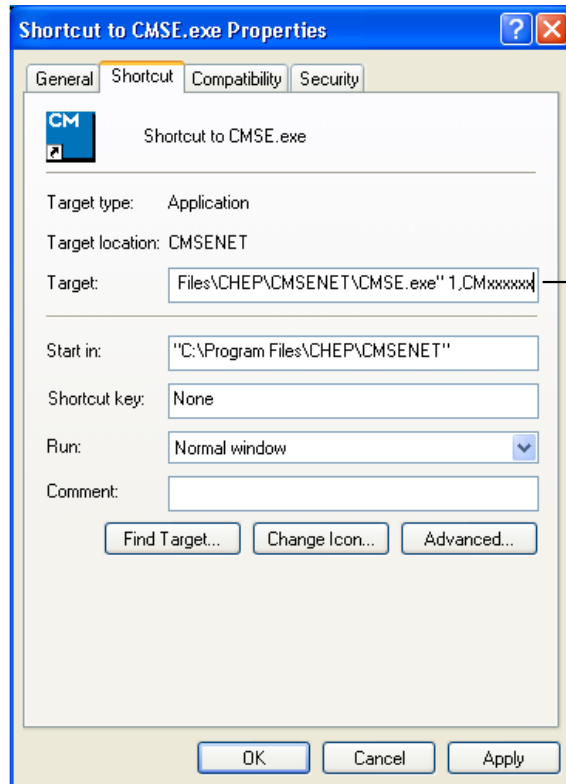
- CHEPMate Server component installed on a File Server or one of the server machines on a Citrix Server Farm.
- CHEPMate Client Component installed on a Citrix Server



Note – It is best to have server and client installed on separate machines in a Citrix environment.

Multiple Icons for Multiple Databases / Icon setup for each Profile:

- To have multiple icons of CHEPMate client pointing to an individual database, follow this process:
- 1. Create a shortcut of CMSE.exe from C:\Program Files\CHEP\CMSNET (**The shortcut should be created from this path only**)
 2. Go to the properties of CMSE.exe and amend the Target field as shown in the picture below



Initial Target:-

"C:\Program Files\CHEP\CMSNET\CMSE.exe"

Change Target to:-

"C:\Program Files\CHEP\CMSNET\CMSE.exe" 1, CMXXXXXX

After quotation mark:

6. Hit the Space bar once
7. Number the database(Numbering should be discrete for each database)
8. \'
9. Database name (i.e. CMXXXXXX)
10. Hit apply

This process will allow this icon to access only the specified database.

- This process creates a separate icon for each separate database.
- This process also allows for different security levels to be applied to different databases and just have icons dedicated to required database(s) per Citrix profile.

Instruction for recommended Registry Entry Changes for CHEPMate Client in a Citrix/Terminal Services environment with multiple databases for multiple accounts on the same CHEPMate Server

Setup1 – For each database/account you need to create a copy of the ...CHEP\CMSNET...\DATA folder and anything under that to the location where you need the files for that database/account.

Step 2 – For each of these databases/accounts (entry set) you need to change the following registry entries to this data folder based on which instance each of them are

1. [HKEY_LOCAL_MACHINE\SOFTWARE\CHEP\CMSNET...\PROGRAM]
“EquipmentPicturesFolder” =
“C:\Program Files\CHEP\CMSNET...\Images\EquipmentPictures”
2. [HKEY_LOCAL_MACHINE\SOFTWARE\CHEP\CMSNET...\PROGRAM]
“ExportDefaultFolder” =
“C:\Program Files\CHEP\CMSNET...\DATA\ExportFiles”
3. [HKEY_LOCAL_MACHINE\SOFTWARE\CHEP\CMSNET...\PROGRAM]
“ImportDefaultFolder” -
“C:\Program Files\CHEP\CMSNET...\DATA\ImportFiles”