
CHEPMATE v4 WHAT'S DIFFERENT?

June 2010

OVERVIEW

CHEPMATE VERSION 4.0.0

CHEPMate version 4.0.0 was released on the 31 May 2010.

Version 4.0.0 was released to address some defects in the previous version (3.2.0) and also provided the opportunity to address some changes to business requirements since the release of Version 3.2.0 back in September 2008.

MAIN FUNCTIONAL CHANGES

- NEW STAR Report Format
- Reconciliation of Date Of Dispatch (DOD)
- Turn Off Effective Date Reconciling for EDO Trading Relationships


MINOR CHANGES

- NET OFF Function Locked
- Auto Reconciling of Portfolio+Plus Entered Movements
- New process for saving PDF and CSV Reports
- Improved Speed in "Docket Report Filter" Screen.
- Improved Speed in Exchange Balance Filter Screen
- Aged Transfer & Aged Exchange Reports
- List screen sorting resets
- Date of Receipt (DOR) less than Date of Dispatch (DOD) error
- Email MAPI updated for Windows 7 (32bit only)

FUNCTIONAL CHANGES

NEW LOOK STAR REPORT

The STAR Report has been updated to reflect the changes made to the manual STAR used by CHEP Asset Management.

STAR® Report
Stocktake Reconciliation Summary 

Customer: CHEP Training - Fizzy Drink Co Account No.: 1610910001
 CHEP Contact: Invoice Date: 23 Aug 2007 Stocktake Date: 23 Aug 2007
 Equipment: 10001: CHEP Pallet Aust

Physical Stocktake

Site 1	0
Site 2	0
Site 3	0
Total Count	0
Add equipment Owed by Partner	592
Deduct equipment Owed to Partner	105
ADJUSTED PHYSICAL BALANCE (A)	487

CHEP Invoice Closing Balance: 2983

ADD - TRANSACTIONS ON NOT INVOICED

Issues & Transfers ON	630
Corrections & Reversals ON	135

DEDUCT - TRANSACTIONS OFF NOT INVOICED

Returns & Transfers OFF	6
Corrections & Reversals OFF	99

DEDUCT - ADJUSTMENTS

Equipment on Invoice Not Yet Received	1089
Authorised Suspended Credit Balances	0
ADJUSTED CHEP BALANCE (B)	2554

RECONCILED VARIANCE (A-B) **-2067**

Dockets Pending Action which may affect results

Annotations:

- Easily Identified Equipment (points to vertical label: 10001: CHEP Pallet Aust)
- ADD your Not Invoiced ON (points to blue bar)
- DEDUCT your Not Invoiced OFF (points to red bar)
- DEDUCT Adjustments (points to red bar)
- More White Space to save your printer (points to right margin)
- New Reports to replace old (points to ON/OFF bars)
- "Corrections On" + "Reversals On" = "Corrections & Reversals On" (points to ON bars)
- "Corrections Off" + "Reversals Off" = "Corrections & Reversals Off" (points to OFF bars)

STAR REPORT SCREEN CHANGES

PHYSICAL STOCKTAKE

Site 1 : 2078
 Site 2 : + 0
 Site 3 : + 0
 Total Count = 2078

Add Equipment Owed by Partner + 592
 Deduct Equipment Owed to Partner - 105

ADJUSTED 965

This is the total of all outstanding equipment recorded as an exchange (IOU) ONTO your site. This is equipment on your site but not reflected in your invoice balance.

RECONCILED VARIANCE (A-B) = 11

Main Update Graph Data Print Graphs Print Details Print Summary

HELP - What's that report mean?
 Hold your pointer over the report name for a hint box.

Update your Graphs

Detailed Reports Categorized and Grouped
 "Additions" Vs "Deductions"

Physical Stocktake (A) CHEP Invoice (B) Equipment : 10001:CHEP Pallet Aust

CHEP Invoice Closing Balance 2983

ADD - TRANSACTIONS ON NOT INVOICED
 Issues & Transfers On + 630
 Corrections & Reversals On + 135

DEDUCT - TRANSACTIONS OFF NOT INVOICED
 Returns & Transfers Off - 6
 Corrections & Reversals Off - 99

DEDUCT - ADJUSTMENTS
 Equipment on Invoice Not Yet Received - 1089
 Authorised Suspended Credit Balances - 0

ADJUSTED CHEP BALANCE (B) = 2554

RECONCILED VARIANCE (A-B) = 11

New Naming for your Reports
 See table below

DETAILED REPORTS NAME CHANGES

OLD REPORT	NEW REPORT
Sub Total Physical Stocktake	Total Count
Equipment Owed by Partner	Equipment Owed by Partner
Equipment Owed to Partner	Equipment Owed to Partner
(A) ADJUSTED CUSTOMER TOTAL	ADJUSTED PHYSICAL BALANCE (A)
CHEP Invoice Closing Balance	CHEP Invoice Closing Balance
Transactions On Not Invoiced	Issues & Transfers ON
Corrections On Not Invoiced	Corrections & Reversals ON
Reversals to Transactions Off Not Invoiced	
Transactions Off Not Invoiced	Returns & Transfers OFF
Corrections Off Not Invoiced	Corrections & Reversals OFF
Reversals to Transactions On Not Invoiced	
Equipment on Invoice Not Yet Received	Equipment on Invoice Not Yet Received
Authorised Suspended Credit Balances	Authorised Suspended Credit Balances
(B) ADJUSTED CHEP	ADJUSTED CHEP BALANCE (B)
VARIANCE (A-B)	RECONCILED VARIANCE (A-B)

Note: Red = Deduct; Black = Add

RECONCILIATION OF DATE OF DISPATCH

Due to EDO transactions CHEPMate will now Reconcile Data of Dispatch as well as Effective Date.

The process for Matching and Reconciling Date of Dispatch is identical to the current way you manage Effective date.

As part of matching and reconciliation process you will note that the Date of Dispatch is now included in Exception dockets.

TURN OFF EFFECT DATE MATCHING FOR EDO TRADING RULES

When a transaction includes an 'automated' EDO trading rule the effective date of the transaction is calculated automatically and may not need to be checked.

The following will outline how you can turn off effective date matching for EDO trading relationships.

Note: Do NOT use this feature for manually calculated Delay Days.

Location Details

CHEP Account Code *: 1610200230 Location Class *: Trading Partner

Name *: CHEP Demonstration A/c Sinclair Short Name :

Customer Reference :

Account Details

Address Other Contact Info Movements EDO

Skip EFD Matching for Transfers Off :

10001

10002

Skip EFD Matching for Transfers On :

10001

10002

Skip EFD Matching Transfers Off

This field allows you to select the equipment Codes that are EDO for this account.

If you have a general EDO rule for your account make this change on the Own Location (your account Number)

Skip EFD Matching Transfers On

This field allows you to select the equipment Codes that are EDO for this account.

If you have a general EDO rule for your account make this change on the Own Location (your account Number)

MINOR CHANGES

NET OFF FUNCTION LOCKED

The Net Off function has been locked to prevent mistakes and misuse of the function. If your account wishes to use the Net Off Feature please contact the CHEP Helpdesk for to discuss.

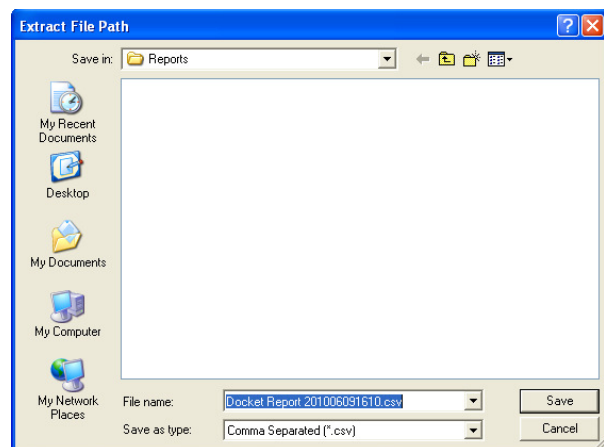
AUTO-REC OF PORTFOLIO+PLUS ENTERED DOCKETS

To improve cross system compatibility any docket entered by your account into portfolio will now automatically reconcile when they are imported into your CHEPMate the following day.

NEW PROCESS FOR SAVING PDF AND CSV REPORTS

In Previous versions of CHEPMate when Exporting a report to a PDF or CSV file CHEPMate would automatically save the file to the “..\\ExportFiles\\Reports folder” and this could not be changed.

In version 4 we will allow users to select the location they wish to save the CSV or PDF file and at the same time specify the name they wish to save it as.



IMPROVED REPORT SPEEDS

Docket Report Filter

The docket report screen and Exchange Balance Reports were noted as being too slow in previous versions. We have improved the speed of response for these reports dramatically through some small changes.

Exchange Balance Filter

MAPI EMAIL FUNCTIONALITY UPDATED

Microsoft removed Simple MAPI functionality from Windows with the release of Windows 7. To facilitate automatic generation of CHEPMate emails for Windows 7 users we have updated to extended MAPI functionality.

Note: Process has not changed for exporting dockets, correction or reversals.

DEFECTS RESOLVED

AGED TRANSFER AND AGED EXCHANGE REPORTS

There were instances the Aged Transfer and Aged Exchange reports would not include some new format dockets. This was a defect in Version 3.2.0 and has been resolved in version 4.

SORTING RESETS

When accepting a docket from Exception dockets or Review corrections your place in the list is remembered allowing you to quickly move on to the next.

DATE OF DISPATCH > DATE OF RECEIPT

This error was received in reply to Exports and delayed docket processing. CHEPMate will now identify this issue at the time of Data Entry.